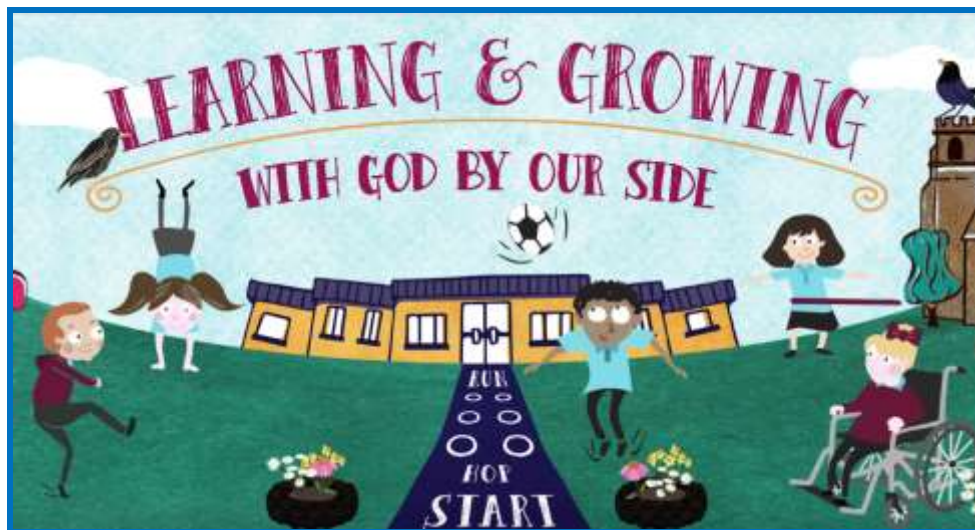




St Mary's Church in Wales Primary School, Ruabon



Reception Information Booklet
for Pupils, Parents and Caregivers

Welcome to Reception

Beginning in full time school is a major event in the life of a four year old and it won't be long before your child will be starting full time with us at St Mary's Church in Wales Primary School.

There will be lots of new things to learn and of course you will want to ensure your child is well prepared for this important event.

We aim to make it a happy and memorable experience. We hope that this booklet will provide some useful information that will help your child to settle quickly into school.



CONTACT DETAILS

St Mary's Church in Wales Primary School

Park Street

Ruabon

Wrexham, LL14 6LE

If your child is unwell,
please contact the school
before 9am by telephone and
leave a message, on the first
day of absence.

Tel:

01978 820979

Head Teacher:

Mrs Nicola

Booth

Requests for
holidays must be
sent via email to
school.

web: www.stmarysruabon.co.uk

email: mailbox@stmarys-ruabon-pri.wrexham.sch.uk

Parents as Partners



We provide many opportunities for parents and carers to take an active part in their child's education. These include:

- Reading diary to complete
- Class assemblies
- Sport Events
- Regular newsletters
- Weekly Seesaw photos and updates

Please use our school app/website to see posts and pictures, showing what we have been learning and what fun we have been having in Reception!

<https://www.stmarysruabon.co.uk/>



Most importantly, our family ethos is central to our Church school and as such, we operate an `Open-Door Policy', where parents are actively encouraged to meet with staff to discuss any concerns at the earliest opportunity.

We are usually available at 8.45 am or 3.00pm to answer any questions. Phone calls to the School Office are most welcome, where we will offer assistance, or will arrange an appointment with any members of staff if requested.

The school is committed to safeguarding all children in our care. We aim to keep children safe by adopting the highest possible standards and taking all reasonable steps to protect children from harm. Our Safeguarding and Child Protection Policy is available to read upon request.

What can I do With my Child Before They Start School?

- ✓ Give your child as many varied experiences as possible: drawing, painting, cooking, singing, making models, playing games, jigsaws, etc
- ✓ Get them used to: pencils, crayons, felt pens, chinks, paints, play dough, scissors.
- ✓ Count everything and share things out.
- ✓ Help your child to be independent when getting dressed and putting on their shoes and coat.
- ✓ Talk to them all the time. Name familiar things and discuss what they see around them and what things are for. Talk about what you see when you are out and about. Watch people work and discuss what they are doing.
- ✓ One of the most important gifts you can offer your child is the enjoyment of books. Please make sharing books a special time and try to read with your child every day as part of your daily routine.



Learning in the Foundation Stage in Wales

Reception is where the excitement begins!

Nursery and Reception children learn together in an environment which is developed around the children's interests. We pride ourselves on being an exciting and engaging place to be - encouraging our children to be independent learners through a range of practical activities. We follow a thematic curriculum which allows us to be creative with our lessons and let the children lead their own learning.

As our children enter the classroom, they learn primarily through a variety of play and real-life experiences. Our teaching is delivered through carefully planned tasks and focus activities. The children access their environment freely. Their development is tracked through detailed, daily observations and child-initiated interaction. This information is then transferred into your child's book. We use these to record individual interests, progress and plan the next steps of your child's learning. We also utilise Seesaw to share your child's journey through individual photos and videos.

St. Mary's Church In Wales Primary—Our Vision



"Learning and growing with God by our side."

Our Vision

Learning together at St. Mary's to motivate and inspire our children to become the best they can be and to enable them to become lifelong learners.

We will provide challenge and enjoyment through excellent learning experiences, using a variety of pedagogical approaches, informed by pupil voice.

Our Christian values underpin our curriculum. Our curriculum is relevant, using authentic contexts, enabling a sense of belonging and a pride in our Welsh heritage.

Healthy, confident individuals

Our Values

Compassion
Honesty
Friendship
Thankfulness
Forgiveness



Enterprising, creative contributors

Our qualities

At St. Mary's we are nurturing and supportive. Our key drivers are providing our pupils with a caring and safe environment in which to learn and grow happily. We are an inclusive school and we value all of our pupils equally, celebrating that each of us is different and special in our own, unique way. We are motivated and aim to innovate and inspire, encouraging our pupils to use their own voices to help inform their learning journeys.

We have high expectations and a strong Christian ethos that permeates throughout everything that we do.

Ambitious, capable learners

Ethical, informed citizens

Our Curriculum

Curriculum for Wales gives schools the freedom to design our own curriculum based on:

- Four Core Purposes
- Six Areas of Learning and Experience
- Mandatory Elements and Cross-Curricular Skills development
- Five Cross-Cutting Themes



Please see the following link for further information:

<https://hwb.gov.wales/curriculum-for-wales/a-new-curriculum-in-wales-a-guide-for-parents/>

Here at St Mary's, we have designed a curriculum to enable our learners to develop in a way described in the four core purposes.



Our curriculum is inclusive and suitable for all learners of differing ages and abilities. It is broad and balanced, encompassing a variety of topics and enquiry questions

Our School Day

8.45am Doors open

8.55am Doors closed. Carpet time - Register/ Helpwr Heddiw

9:05am Dough disco/ news/ circle time/ maths

9:15am Chwarae pawb (everyone play)

10:30am Snack and Play time on yard.

10.45am Phonics focussed activity

11:15am Chwarae pawb

12:00pm Lunch time

1:00pm Carpet time

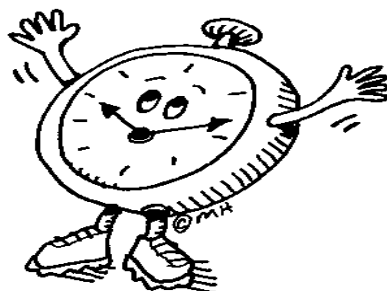
1:20pm Topic time and Chwarae pawb

2.30pm Circle time/ song time

2.50pm Tidy up time

3.00pm Home time

Reception like to go with the flow so sometimes our timetable each week is not always the same!



Looking Smart!

The Governors request that all children attending St Mary's School wear the set school uniform to give a common identity and a sense of belonging. School branded uniform is available from RAM Leisure, however, we do not insist on school branded clothes. Please feel free to purchase uniform from other outlets.

A grey skirt, pinafore, trousers, or shorts with a light blue polo shirt and maroon sweatshirt or cardigan. Blue and white checked dresses may be worn in the summer.

We ask that sensible black school shoes are worn by all.
Trainers are not part of the school uniform except for PE lessons.

Branded St Mary's school uniform is available to be purchased at:

<http://www.ourschoolwear.co.uk>
RAM Leisure, Trinity House
31 Whitegate Industrial Complex
Wrexham
LL13 8UG
Tel : 01978 360360

Please ensure that all your child's uniform (including coats, shoes and bags) are clearly labelled with their name.

Sports Kit

Please wear your kit to school on PE day.

Blue t-shirt

Black shorts/joggers

Black slip-on pumps in a drawstring bag (to be kept in school)



Your child will need a book bag ready for homework and reading books. These are also available from the [ourschoolwear](http://www.ourschoolwear.co.uk) website.



Snacks



We encourage children to eat healthily and make healthy food choices so each child will be offered a choice of snack each day e.g.

Apples, bananas, cucumber, oranges, strawberries, yogurts, toast, crackers and cheese, crumpets, raisins, biscuits.

Please let us know of any allergies.

Snack money is £1 per week. Payable at the beginning of each term please online via ParentPay.

Children will be offered milk or water to drink.

We ask for a contribution of £1.50 for a school water bottle at the beginning of the September term please (please send to school in a named envelope).

Dinners

At lunch time, children are able to choose to bring either their own packed lunch (**brechdanau**) or a school dinner (**cinio**).



Our lovely school cook makes our delicious hot dinners which are free for all primary school children.



If your child requires a hot school dinner, please order meals online via ParentPay. We ask that parents select meal for each day. You may find it helpful to book for the week in advance on a Sunday evening.



Breakfast Club



St Mary's School offers Breakfast club every morning from 7.50am.

Children will be offered toast or cereal and a drink.

Breakfast club costs £3 a day if you arrive between 7.50am and 8.20am (£1 a day if eligible for the Schools Essentials Grant). Please use Parent Pay to pay for breakfast club sessions.

It is free if you arrive between 8.20am and 8.30am. Breakfast club closes at 8.30am and children who arrive after this time will not be admitted.

Outdoor Learning

Outdoor learning is really important to our development. Children will be playing outside everyday come rain or shine (so please make sure they have a named coat).

We will also spend time in our school garden every week for **Welly Wednesday.**

On this day, your children will need to come dressed in old clothes and bring their wellies in a named carrier bag. All in one waterproof suits are ideal for Welly Wednesday, if you are able to provide one.



Topics

The topics that we teach in the Foundation Stage may vary from year to year, depending on the children's interests and experiences.

Some of the topics we may cover this year are.....

Ourselves and our homes

Bears

Growing

Under the sea

Winter

Childhood is not a race to see how quickly a child can read, write, and count. Childhood is a small window of time to learn and develop at the pace which is right for each individual child.



Please remember that, even though all pupils are able to access 'Universal Free School Meals', some families may also be eligible for support with trips, uniform, etc. If you think you may be eligible please sign up for 'FREE SCHOOL MEALS' and the 'SCHOOL'S ESSENTIAL GRANT' on the Wrexham Council website.

<https://wrexham.gov.uk/service/school-meals/free-school-meals>